



PER MONTH

£2,400 Per Month

Brady Street

London, E1 5DN

Located moments from Whitechapel Station is this large double bedroom apartment with private balcony. INCLUSIVE OF HEATING AND HOT WATER.

The property features a large reception room with dark wood flooring, access to a large private balcony and opening which looks onto a modern fitted kitchen.

The 1st floor features 2 good size double bedrooms, family bathroom and separate W/C.

The flat is located in Whitechapel, with its colourful Victorian history and now rich with culture. Brick Lane is a short walk from the property, with its independent stores, quirky coffee shops, bars and some great restaurants. The City of London is a 10-minute walk away.

Transport links in this area are excellent and include, Whitechapel station, Aldgate East, Liverpool Street and major bus routes can be found close by.

Available. August

5 weeks deposit - £2769.23

12 month contract: break clause subject to offer

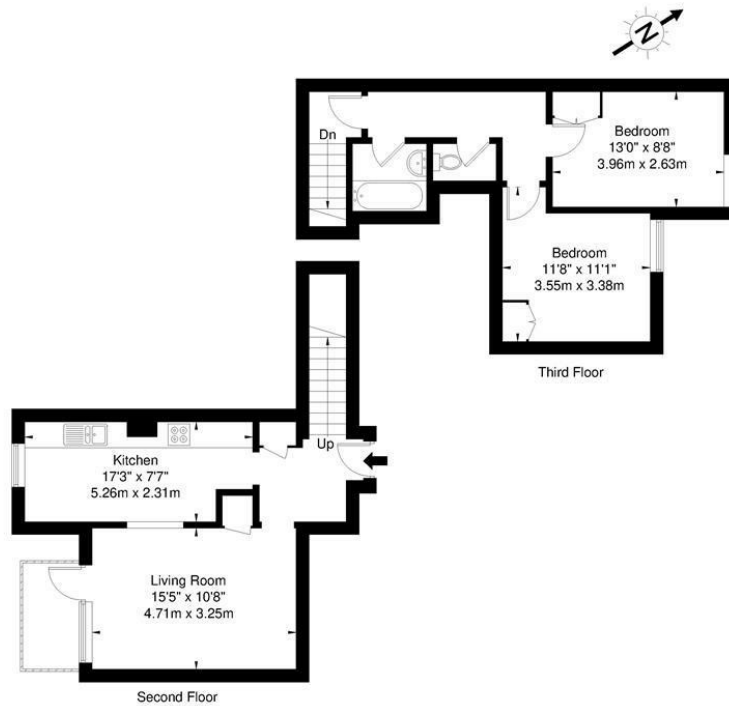
Council tax: Band C





Heathpool Court, Brady Street, E1 5DN

Approx. Gross Internal Area = 71.6 sq m / 770 sq ft



Ref

Copyright

**BLEU
PLAN**

The Floor plan is not to scale and measurements and areas shown are approximate and therefore should be used for illustrative purposes only. The plan has been prepared in accordance with the RICS code of Measuring Practice and whilst we have confidence in the information produced it must not be relied on. If there is any aspect of particular importance, you should carry out or commission your own inspection of the property.

Copyright © BLEUPLAN

Energy Efficiency Rating		
	Current	Potential
Very energy efficient - lower running costs		
(92 plus) A		
(81-91) B		
(69-80) C		
(55-68) D		
(39-54) E		
(21-38) F		
(1-20) G		
Not energy efficient - higher running costs		
England & Wales	EU Directive 2002/91/EC	

Agents Note: Whilst every care has been taken to prepare these particulars, they are for guidance purposes only. All measurements are approximate and are for general guidance purposes only and whilst every care has been taken to ensure their accuracy, they should not be relied upon and potential buyers/tenants are advised to recheck the measurements

OFFICE ADDRESS

88 Cheshire Street
London
E2 6EH

OFFICE DETAILS

0207 739 6969
info@peachproperties.com
www.peachproperties.com